

Suprapatellar Tibial Nail

Product Information

Nail

REF. NO.	Size(20mm increments)
075140240-075140420	Φ8×240mm-420mm
075150240-075140420	Φ9×240mm-420mm
075160240-075160420	Φ10×240mm-420mm
075170240-075170420	Φ11×240mm-420mm

4.5mm Locking Screw

REF. NO.	Size
075190024—075190070	24-70mm (2mm increments)

5.0mm Locking Screw

REF. NO.	Size
075200024—075200080	24-80mm (2mm increments)

End Cap

REF. NO.	Size
074650000	0mm
074650005	5mm
074650010	10mm
074650015	15mm

Use 5.0mm locking screw in proximal part and distal part of 10mm and 11mm nail, for 8mm and 9mm nail, use 4.5mm locking screw in distal.

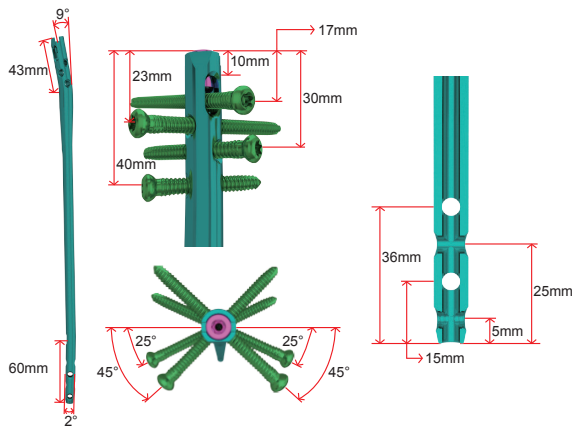
Suprapatellar Tibial Nail



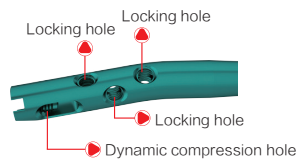
Nail

Proximal 43mm with 9° anterior bending, for easier insertion and reduce fragment motivation from insertion.

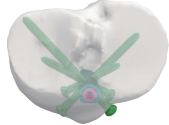
Multi fixation method from proximal and distal, indicate ultimate proximal and distal tibial fractures.



- Locking design for stronger fixation, reduce postoperative fragment dislocation.
- 7mm compression distance with proximal compression hole.



Multi points of fixation provide angular stability and stable support for tibial plateau.



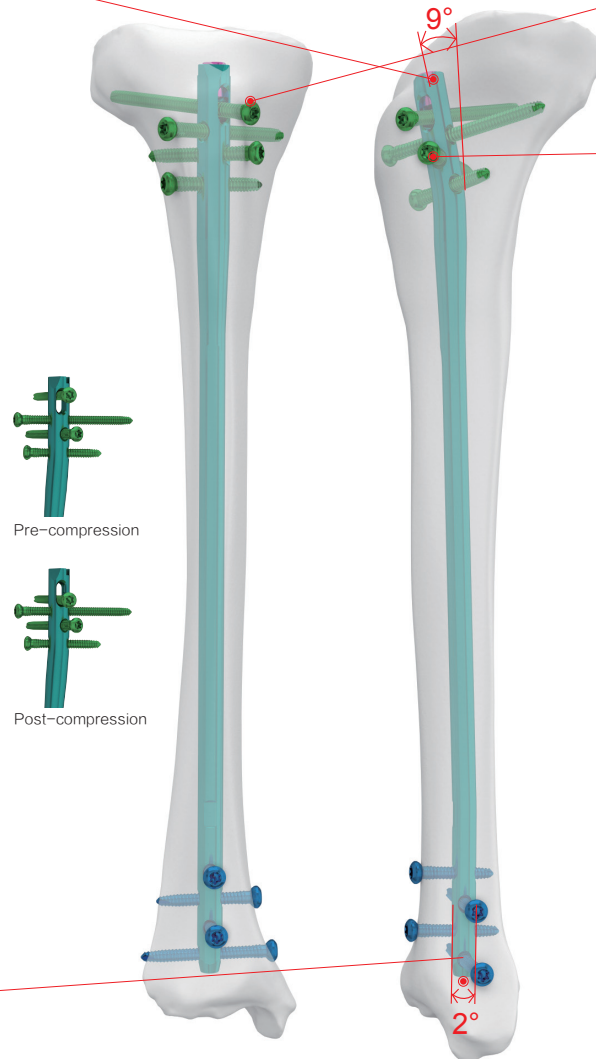
2° anterior bend in distal, match the anatomy of tibial distal end.

Warning

This flyer is just for understanding the specific product features. For clinical usage, please refer to the surgical guide. Instruction by experienced surgeon is highly recommended.

End Cap

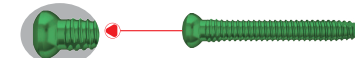
Four different length end cap (0mm, 5mm, 10mm, 15mm) for easier nail remove.



Locking Screw



Star-drive design provide optimum torque transmission and better self containing.



The 3 cycles of proximal thread are designed in larger diameter to prevent back out.

Instrument

Location sleeve



Drill sleeve



Protection sleeve



Handle for protection sleeve

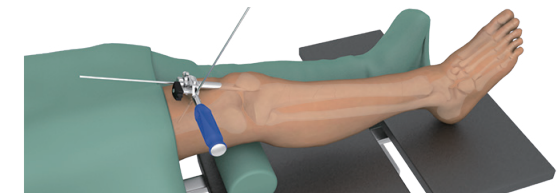


Location sleeve: PPSU material, reduce joint capsule irritation.

Drill sleeve: Multi holes design for better entry point positioning.

Protection sleeve: The side hole facilitates intraoperative drainage, and the clip holding design provides a more stable fixation.

Protection sleeve handle: Head hold can be directly connect to the drainage tube, k-wire hole design for temporary fixation.



Indications

- Proximal tibial fractures
- Fractures on distal third of the tibia
- Shaft fractures

Contraindications

- General or local infection, osteomyelitis
- Patient can't tolerate operation or anesthesia because of poor health
- ORIF will lead to local infection or skin necrosis because of poor local soft tissue
- Severe osteoporosis
- Open fracture, obvious contamination